

Why Protect Carnivores?

Carnivores manage herbivore populations

Carnivores remove disease from environment

National pride, carnivore's part of culture

Wildlife tourism, receive tourism benefits.



How to protect livestock while grazing?

✓ **DO**

✓ Use adult herders, the more the better

✓ Graze in open areas

✓ Graze away from protected areas

✓ Take guard dogs with herd



✗ **Do NOT**

✗ Use just inexperienced children or woman herders

✗ Graze at night



Develop Community Conservancies

Engage entire community in protecting livestock, neighbourhood watch, build fence around village.

Assign community carnivore guardian.

Develop designated grazing areas, better manage pastures and avoid contact with carnivores. Limit livestock population to avoid over grazing.

Establish Eco label, sell meat for a premium to tourism companies.

Welcome tourists into your community to see livestock, culture and wildlife.

Why Killing Carnivores Does Not Help Protect Livestock?

Disrupts social structure causing family group to be more mobile and disperse further.

Opens up territory giving opportunity for another carnivore to move into the area.

Can cause some carnivores to adapt reproductive behaviour and increase offspring rate.

'Taste for livestock' is more often learnt from the environment, it is rarely past between individuals therefore it is better to prevent carnivores from killing livestock in the first place to avoid them developing a 'taste for livestock'.

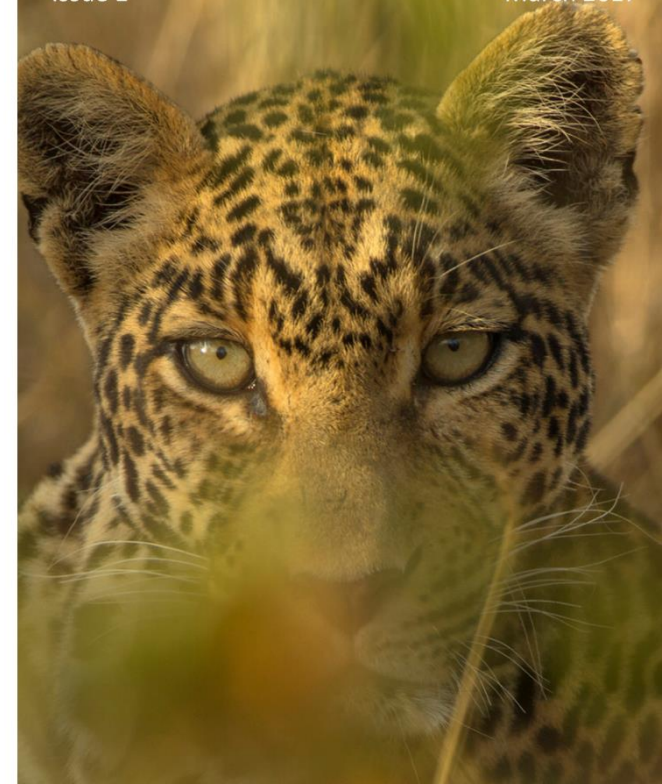
Emergency Wildlife Contacts

Problem wildlife:

..... Tel:

Injured wildlife:

..... Tel:



How to Protect Your Livestock from Carnivores

DO use

How to Improve your Boma

Do NOT use



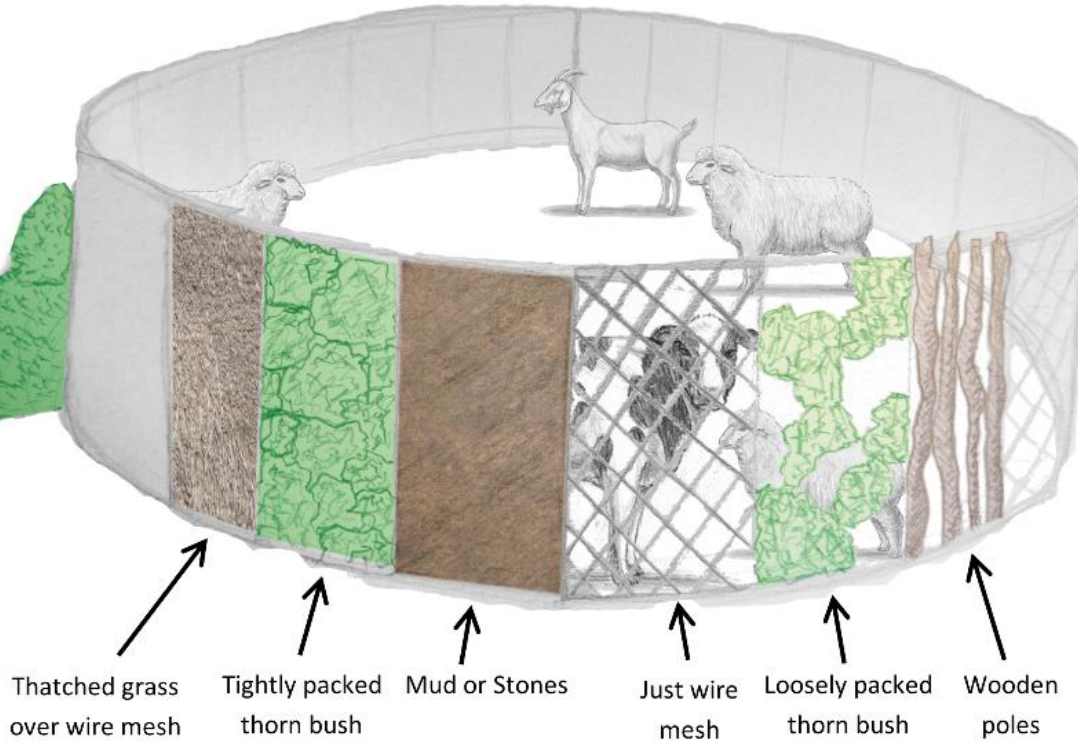
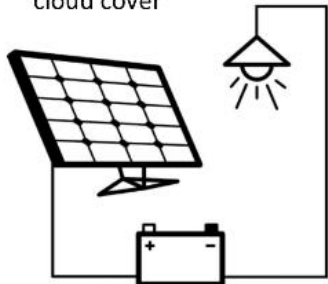
✓ **Guard dogs**, train dogs to bark at approaching wildlife

✓ **Thorn bush on outside of opaque boma walls**, stops leopard from jumping or climbing over wall

✓ **Reinforced gates**

✓ **Boma at night**

✓ **Solar powered light at night**, when no moon or cloud cover



Thatched grass over wire mesh

Tightly packed thorn bush

Mud or Stones

Just wire mesh

Loosely packed thorn bush

Wooden poles

✓ **Opaque boma walls**

Why? Livestock cannot see carnivores so less likely to stampede

✗ **Transparent boma walls**

Why? If livestock see carnivores they will stampede and break out of boma



✗ **Scarecrows**

Carnivores learn they are not dangerous, attract more carnivores than they scare

✗ **Hyenas** — thorn bush as hyena can barge/force entry into boma.

✗ **Leopard** — easy to climb surfaces or jumpable low walls

✗ **Lion** — transparent walls

✗ **Cheetah & Wild Dog** most likely to take livestock while grazing